



JANAJEEVA ORCHID, A3 B BLOCK,
GROUND FLOOR, KITHAGNUR, HALEHALLI,
BANGALORE-560036

+91-7899908027

tagotrix@gmail.com



TAGOTRIX INSTRUMENTATION TECHNOLOGIES

Tagotrix
Stepping Towards Solution

JANAJEEVA ORCHID, A3 B BLOCK,
GROUND FLOOR, KITHAGNUR, HALEHALLI,
BANGALORE-560036
CONTACT NO: +91-7899908027
TAGOTRIX@GMAIL.COM

Industrial | Pharma | Analytical | Life Science



+91-7899908027

tagotrix@gmail.com

About Us

Tagotrix Instrumentation Technologies focus on Analytical, Biotechnology, Industrial Instruments, Our office located in Bengaluru, Karnataka.

We are continuously working to deliver innovative design & superior features in affordable price range to our customers.

We ensure to set up better ways of offering solutions that solve everyday problems, save research time and increase productivity.



Reliable Cooperation

We are consistently working out of the box to bring creative products and customize solution for Industries and laboratories to bring ease to their everyday routines.

We ensure the product to be delivered on time for which we keep the most demanding and routine products always in our stock for immediate supply.

We always believe that trusted relationship with customers plays pivotal role to gain insight on how we improve our products to better fill their needs.

INDUSTRIAL, PHARMA & LABORATORY INSTRUMENTS



HEATING MANTLE



MAGNETIC HOT PLATE



INCUBATOR / BOD



OVEN



MICROSCOPE



DEEP FREEZER
(-20/-40/-80 DEGREE)



AUTOCLAVE



MUFFLE FURNACE



ULTRASONIC CLEANER



DIGITAL WATER BATH



DRY BATH INCUBATOR



HYBRIDIZATION OVENS



PROBE SONICATOR



AUTOMATIC DIGITAL
POLARIMETER



WATER - OIL BATH



FUME HOOD



LAMINAR AIRFLOW



BIO-SAFETY CABINET



VACUUM PUMP



MOISTURE BALANCE



ROTARY EVAPORATOR



REFRIGERATOR



MICROTOME



PERISTALTIC PUMP



ORBITAL SHAKING
INCUBATOR



STABILITY CHAMBER



WATER PURIFICATION
SYSTEMS



FLOOR MODEL REFRIGERATED
CENTRIFUGE



VACUUM OVEN



VORTEX MIXER



ICE FLAKER



U.V. CABINET

ELECTRON MICROSCOPY CONSUMABLES



Transmission and Scanning Electron Microscopy, Electron Microprobe Analysis, Atomic Force Microscopy, Confocal Laser Microscopy, Light Microscopy and Sputter Coater

SEC-SCANNING ELECTRON MICROSCOPE



Motorized Stage

X,Y,Z,R,T
(Fully motorized)

Auto Setting

Focus, Contrast, Brightness

Navigation Mode

Top View CCD Camera

The only Table-top SEM of which has 5-axis, enables unlimited movement of stage

Easy and convenient image acquisition possible with "Click & Move" which is one of features of Motorized stage

Able to get images of variable angles via Tilting $-45^{\circ}\sim 90^{\circ}$, and easily analyze EDS

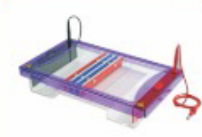
ANALYTICAL PRODUCT

 SCREW CAP VIALS SEPTA, CAPS	 FILTRATION ASSEMBLY	 DRY BATH	 SIEVE SHAKER
 ANALYTICAL WEIGHT BOX	 TEST SIEVES	 SPECTROPHOTOMETER	 VISCOMETER
 ANALYTICAL BALANCE	 QUARTZ CELL	 REFRIGERATED CIRCULATING BATH	 OIL FREE VACUUM PUMP
 ABBE REFRACTOMETERS	 CENTRIFUGE	 MELTING POINT APPARATUS	 TDS METER & DISSOLVED OXYGEN METER
 PH METER & CONDUCTIVITY METER	 DIGITAL OVERHEAD STIRRER	 WATER BATH SHAKER	 MINI CENTRIFUGE
 HEATING MANTLE WITH STIRRER	 KARL FISCHER TITRATOR	 WATER DISTILLATION	 BOTTLE TOP DISPENSER

LIFE SCIENCE



VACUUM CONCENTRATOR



ELECTROPHORESIS



GEL DOCUMENTATION SYSTEM



4 PLATE INCUBATING SHAKER



PCR WORKSTATION



CO2 INCUBATOR



AUTOMATED CELL COUNTER



CELL / TISSUE HOMOGENIZER



THERMAL CYCLER



UV TRANSILLUMINATOR



SHAKER INCUBATOR



LIVE CELL IMAGER



FREEZE / THAWING CHAMBER



FREEZE DRYER



CELL CULTURE CONSUMABLES



GLASSWARE & PLASTIC WARE



LABORATORY FURNITURES



CHEMICALS & SAFETY PRODUCTS



SOLVENTS



UV SAFETY SPECTACLES



2,3,4 PLY MASKS



CRYO GLOVES



KIMBERLY NITRILE GLOVES

BIKAI 1511 HPLC System



- **Reliable performance:** Delivers precise and durable performance, ensuring high uptime and exceptional return on investment (ROI)
- **Operating pressure:** Withstands up to 10,500 PSI (720 Bar) for enhanced separation efficiency
- **Pressure pulsation suppression:** Eliminates the need for dampers, keeping pulsation below 10 PSI
- **Versatile solvent mixing:** Supports multiple solvent mixing modes for flexibility in analysis



Quaternary Pump Model: P40

Specification	P40 Quaternary Gradient Pump Module
Gradient Model	Quaternary gradient (700 bar)
Online Degassing	4-channel(480uL/channel)
Optional Online Degassing	Optional 1-channel(480uL/channel)
Max.Pressure	10,500 PSI 72MPa (@0-2mL/min) 6,000 PSI 41MPa (@2-5mL/min) 3,000 PSI 21MPa (@5-10mL/min)
Flow Rate Range	0.001 mL/min - 10.000 mL/min (increment 0.001 mL/min)
Flow Rate Accuracy	±0.5% (@1mL/min, Water)
Flow Rate Precision	≤0.1% (@1mL/min, Water) (JJG) ≤0.06% RSD (@1mL/min, Water) (ASTM)
Pressure Pulsation	≤1% (@1mL/min, Water,>10Mpa)
Gradient Accuracy	±0.5%
Gradient Precision	≤0.2% SD
Online Wash	Standard
Weight	20Kg
Size	550 mm(D)× 400 mm(W)× 180 mm(H)
Power	100 VAC - 240 VAC? 50/60 Hz, 150 Wmax
Operating Principle	Series double plunger reciprocating pump
Compressibility Compensation	yes
Number of Solvent Lines	4
Biocompatible (pH)	1.0~12.5(Subject to column range)
Environmental Conditions	For best measurement performance, operate in an environment where the temperature ranges from 15 ° C to 35 ° C with a change of less than 2 ° C/hour and the relative humidity ranges from 20% to 80%.



Auto sampler Model: 10C

Auto sampler	A10C
Product	Sub Ambient Auto sampler
Sampling mode	Suction type (Full loop, Partial Loop & μ L pick-up)
Volume of Sample loop	Standard 100 μ L; Optional: 20 μ L/50 μ L
Temperature	Settable from 4°C to Ambient temp
Max. Sampling volume	Full loop= Loop volume; Partial Loop=1/2 loop volume; μ L pick-up=(Loop volume-3*Needle volume)/2
Sample volume	2*54 1.5ml vials 108 (Standard), optional:96*2 well plate
Dosing pump volume	Standard 500 μ L
Sampling Repeatability	Full loop \leq 0.3% RSD; Partial Loop \leq 0.3% RSD (\geq 5?L) & \leq 0.5% RSD (\geq 2?L); μ L pick-up \leq 1.0% RSD
Cross Contamination	<0.0025% (Fixed method and condition)
Pressure limit	9000 PSI
High pressure distribution valve	Standard 1 set, optional 2 sets for realizing SPE function
Cooling function	Optional
Interface	RS232; LAN
Weight	22 KG Cooling:27kg?
Size	550mm(D) \times 400 mm(W) \times 280 mm(H)
Power	100 VAC - 240 VAC, 50/60 Hz, 75 Wmax. (Cooling: 200Wmax)
Injection cycle time	Sampling time: 10S-30S; Cleaning time: 40S-90S
Injection linearity	9999
Environmental Conditions	For best measurement performance, operate in an environment where the temperature ranges from 15 ° C to 35 ° C with a change of less than 2 ° C/hour and the relative humidity ranges from 20% to 80%.



UV-VIS Dectector Model: D10 UVVIS

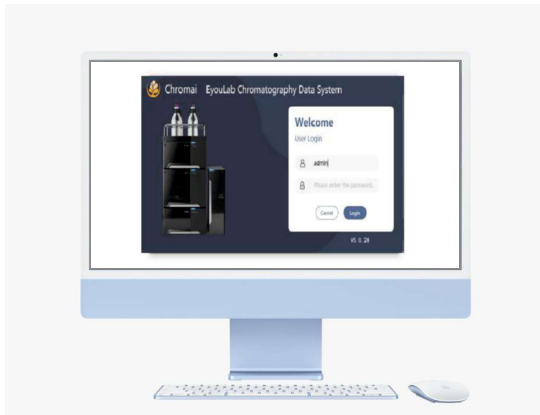
UV-VIS Detector	
Product	D10 UVVIS
Wavelength	90 nm - 900 nm
Spectral Width	8 nm
Wavelength Accuracy	±1 nm
Wavelength Precision	0.2 nm
Noise	±5.0×10 ⁻⁶ AU (JJG) ±3.5×10 ⁻⁶ AU (ASTM)
Drift	1×10 ⁻⁴ AU/Hr at 254nm
Linear Range	>5×10 ⁴ (JJG) >2.5AU (ASTM)
Max.Sampling Rate	100 Hz
Flow cell	Volume :12 μL? Light Path:10 mm, Max.pressure 1200 PSI
Detection Limit	5×10 ⁻⁹ g/mL (naphthalene)
Weight	11 Kg
Size	550 mm(D)× 400 mm(W)× 180 mm(H)
Power	100 VAC - 240 VAC, 50/60 Hz, 90 Wmax
Wavelength calibration	±1 nm
Wavelength validation	0.2 nm
Number of signal channels	1,But it has a time wavelength program
Environmental Conditions	For best measurement performance, operate in an environment where the temperature ranges from 15 ° C to 35 ° C with a change of less than 2 ° C/hour and the relative humidity ranges from 20% to 80%.



Column Oven Model: C10

Column oven	C10
Product	Standard Heating function
Temp. control mode	Air circulation
Temp. Range	Ambient +5°C - 85°C
Temp Accuracy	±1.0 ?
Temp stability	±0.1 ?
Column capacity	Max. 4 * 300mm column
Column switch	Optional 2 sets for SPE or Muti-D Chromatography
Weight	15 Kg
Size	550 mm(D)× 150 mm(W)× 480 mm(H)
Power	100 VAC - 240 VAC, 50/60 Hz, 200 W max

Chromatography Data System EyouLab



Eyoulab is the companion instrument control and data processing software of Chromai Voyager series liquid chromatography analyzers, which provides method development, instrument control, data acquisition and processing, and advanced reporting functions. As well as fully traceable management capabilities and good scalability.

- FDA 21 CFR Part 11/GMP/GLP compliant
- Frequently used functions are integrated in a single window, purifying the user's desktop environment and simplifying complexity
- The graphical monitoring interface can grasp the status of the equipment at any time, which is simple and easy to use
- Powerful data processing functions, providing a variety of integration functions and calculation methods
- Advanced automatic peak width, automatic threshold algorithm, adaptive data collection, automatic adjustment algorithm to achieve the best integration effect
- Equipped with System Suitability Test (SST) module with built-in common pharmacopoeias
- Powerful and complete user management functions to control the access rights of different logins to devices in various situations
- Support networked office, resource sharing, and overall work efficiency (database version support)
- Advanced design concept, with an eye to the future, provides good scalability

